



## Release notes

### Micad Analytics Centre (MAC)

29/04/2026

Document Version 1.5



## Contents

Introduction to Micad Analytics Centre.....	2
What is MAC .....	2
What's new in MAC.....	2
Micad Analytics Centre .....	3
Accessing MAC.....	3
MAC homepage .....	4
Create a dashboard.....	5
Drill-down .....	8
Multi-instance Charts.....	8
Chart categories .....	9
Dashboard example .....	10
Asbestos Statistics.....	10
Room Monitoring dashboard.....	10
Release notes.....	12

## Introduction to Micad Analytics Centre

This guide relates only to Micad Analytics Centre.

This guide offers an overview of the key features in the latest version of the Micad Analytics Centre. We've introduced a new application launcher, called HUB, which is a multi-tenant service providing all clients with access through a single web URL. The interface has been upgraded to the next-generation User Interface (UI) to ensure consistency across all MicadPro applications.

As the application evolves, this document will be updated accordingly. A detailed log of new features and fixes for each iterative release can be found on the final pages.

### What is MAC

Micad Analytics Centre (MAC) is a central platform for creating, accessing and sharing comprehensive dashboards that summarize and visualize data across MicadPro. It enables collaboration with partners and service providers in a read-only format. The dashboards are accessible by desktop PC and mobile devices. Dashboards can be private, public, or shared with specific users, depending on user roles.

### What's new in MAC

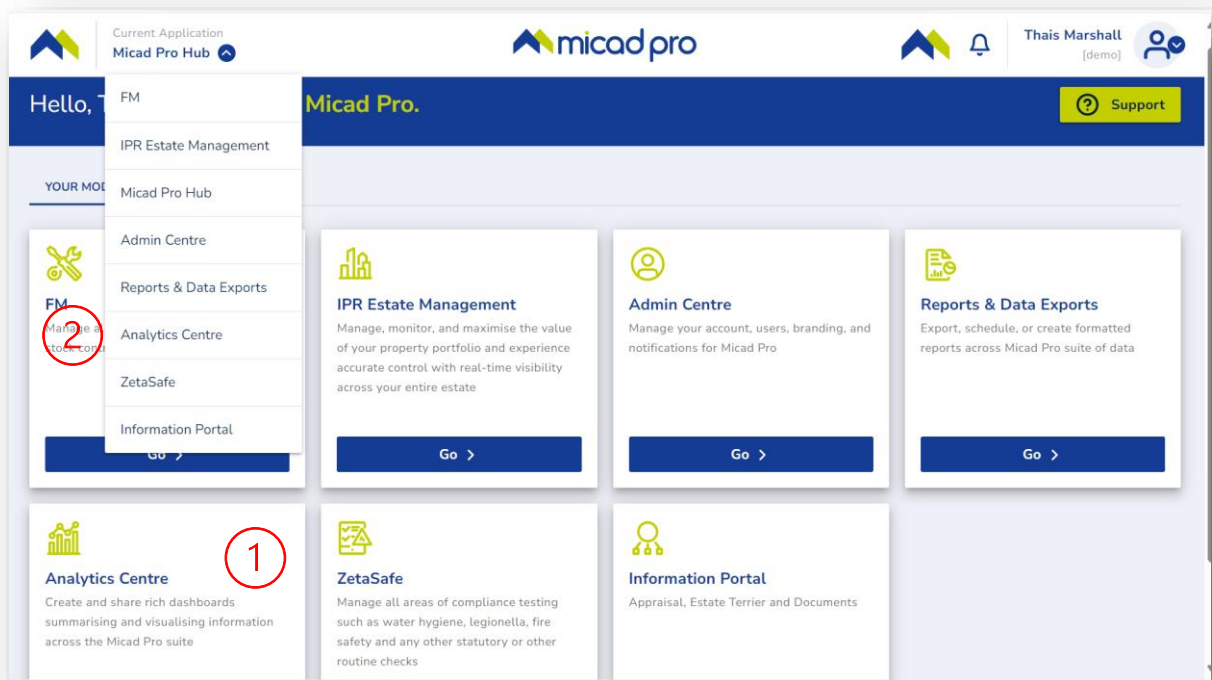
1. New technology many legacy limitations are removed
2. Unified 3<sup>rd</sup> generation UI
3. Unified centralised security 'Single Micad' login and SSO
4. Multi tenancy architecture
5. New flexible URL structures facilitate sharing and integration with third parties
6. Superior and more durable backend infrastructure

# Micad Analytics Centre

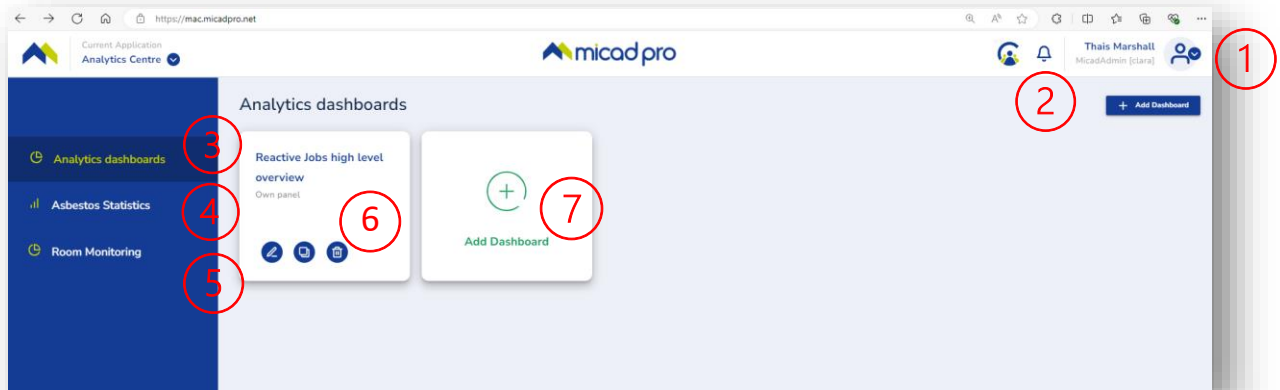
## Accessing MAC

Access MAC through Micad HUB by:

1. Selecting 'Analytics Centre' tile,
2. or changing the current application to 'Analytics Centre'



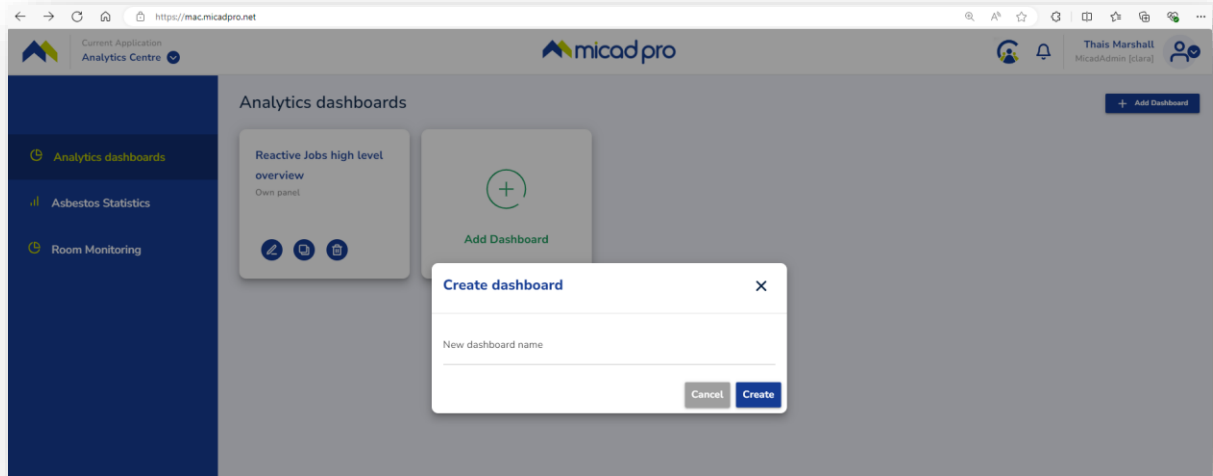
## MAC homepage



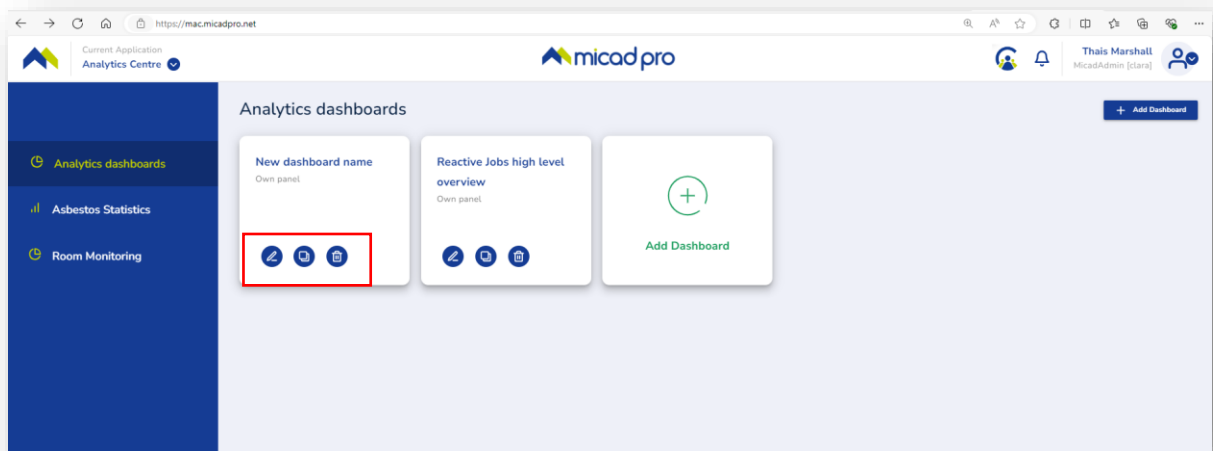
1. Current user account login, access to user details and to 'About' page with release date and product version.
2. MAC notification feature.
3. MAC dashboards.
4. Direct link to the Asbestos reports.
5. Room Monitoring dashboard.
6. Existing MAC dashboards.
7. Option to create a new MAC dashboard.

## Create a dashboard

When selecting 'Add dashboard', the user will be prompted to enter the title of the new dashboard.



Once created, the user can choose to edit, duplicate or delete the new dashboard.

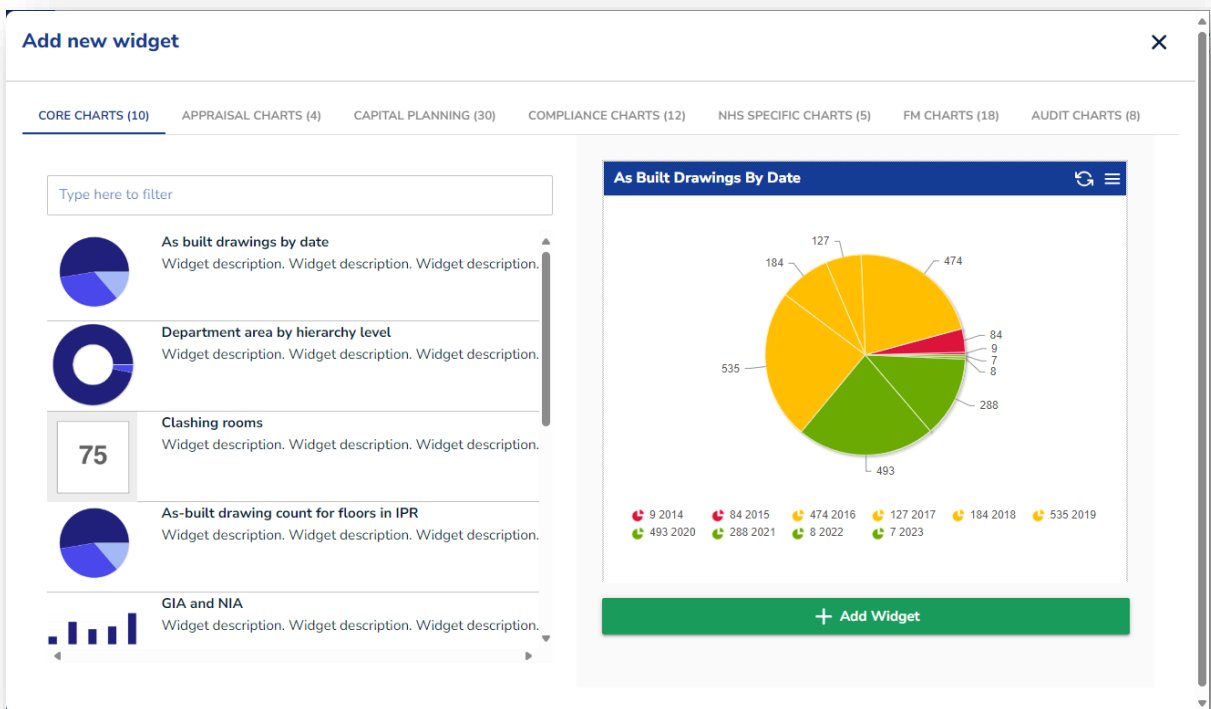


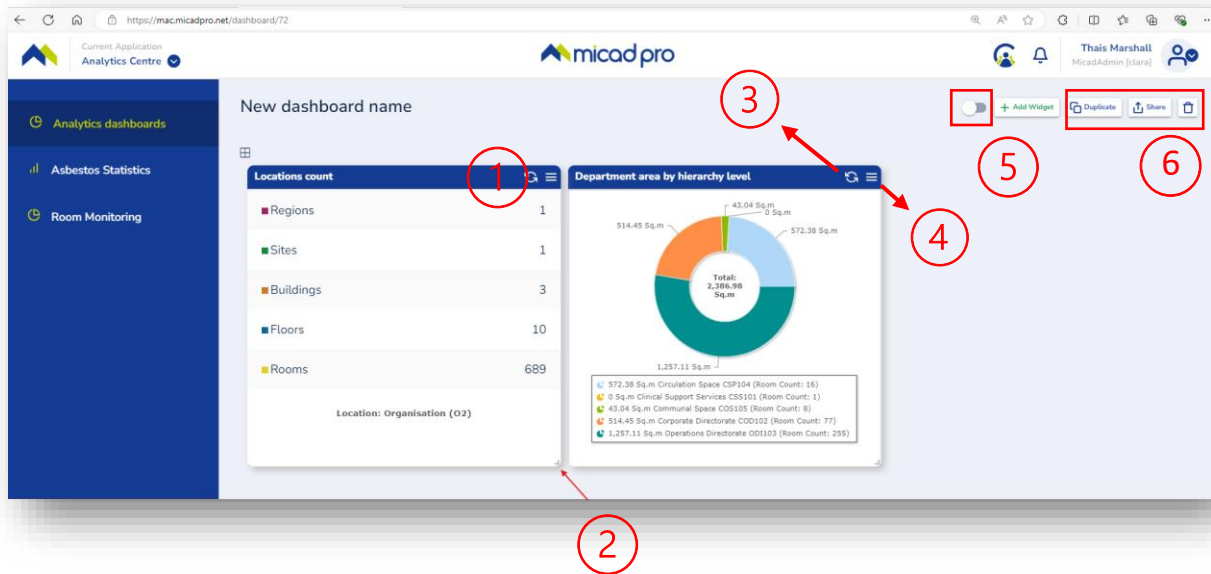
To access the dashboard and add charts/graphs, click on the desired dashboard, then the 'Add widget' option.



A pop-up window will appear displaying all the available widgets based on the client's licenses. You can use the search function to quickly locate a specific widget. After selecting a widget from the list, a preview of the widget will be shown, giving you a clear view of its appearance.

Once you've identified the desired widget, simply click 'Add Widget' to include it in the dashboard.

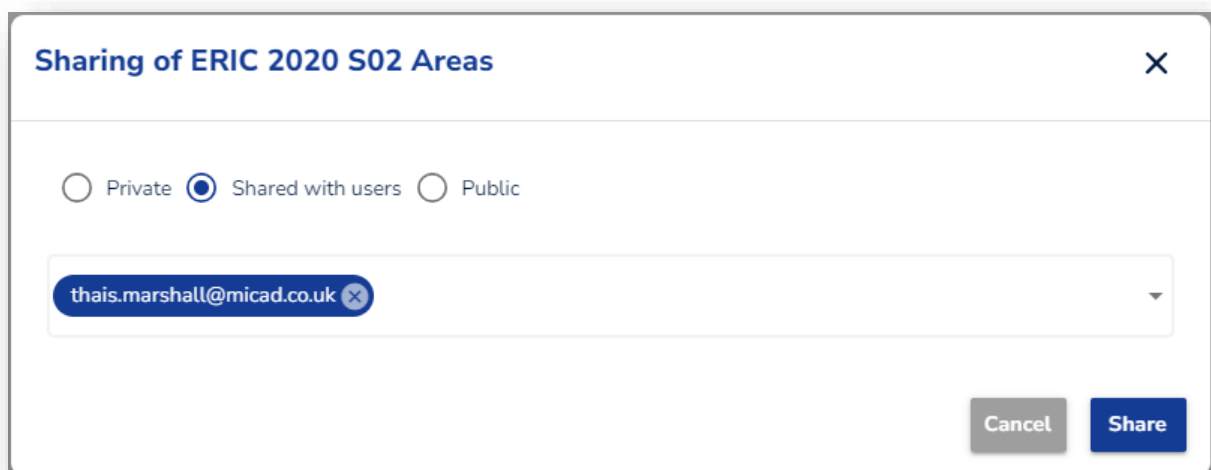




Widgets can be easily rearranged by dragging and dropping (1), resized (2), refreshed to update the data (3), and customized through the configuration settings (4). In the configuration menu, users can apply filters and update the chart title with ease.

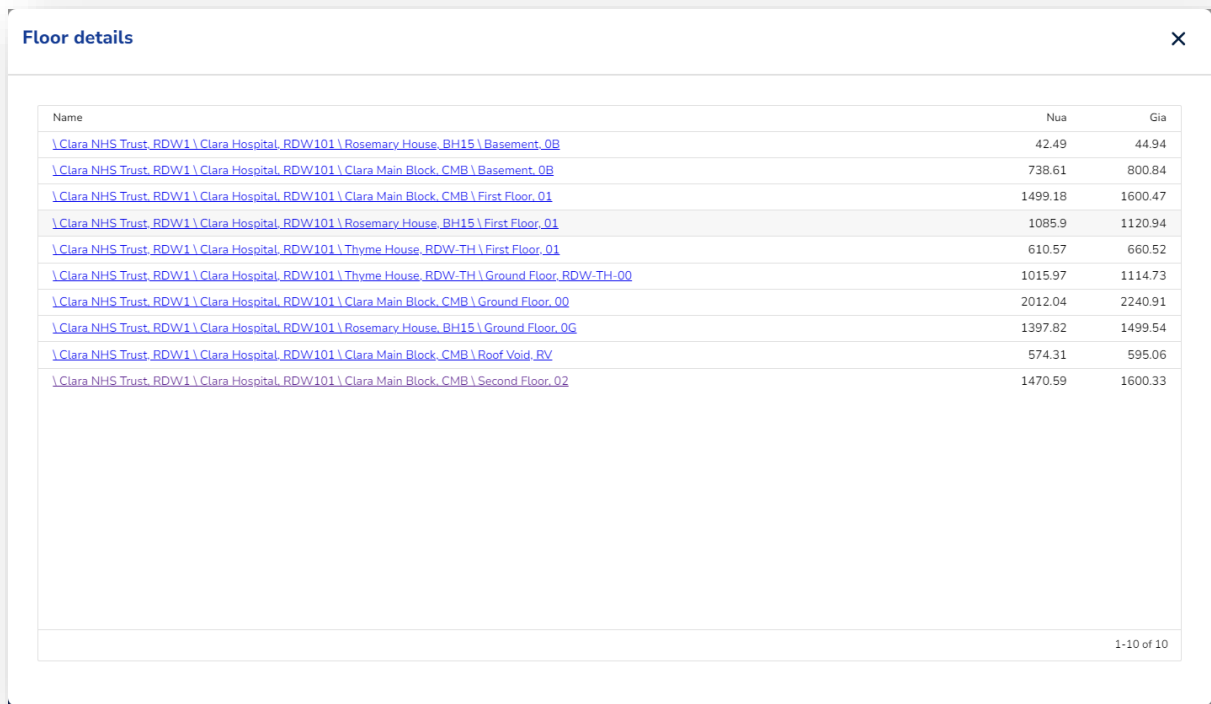
A new feature allows users to apply a global location filter (5) that affects all widgets across the entire dashboard.

In the top-right corner, users have the option to duplicate, share, or delete the dashboard (6). The screen below displays the sharing options: selecting 'Private' makes the dashboard visible only to you, 'Public' allows everyone on the system to view it, and 'Shared with users' allows you to specify individuals by **email**. Those added will receive a link to access the dashboard.



## Drill-down

Some widgets provide drill-down options, allowing users to view additional details about the data, including links to the location details page.

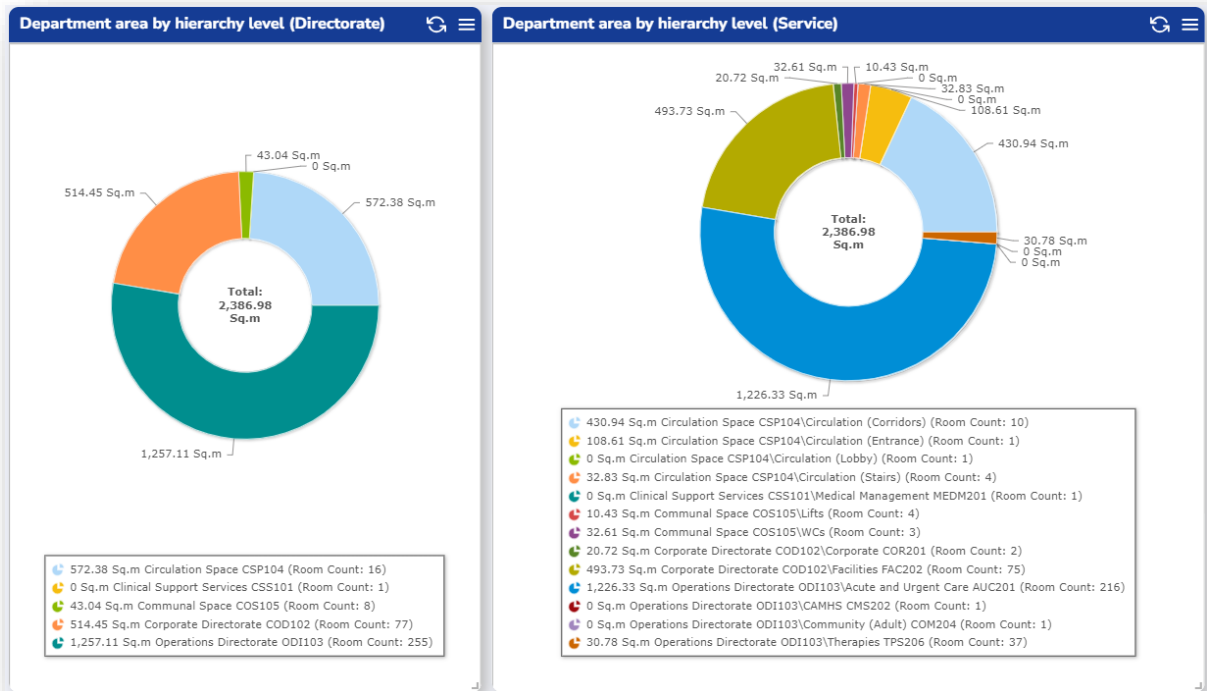


Name	Nua	Gia
<a href="#">\Clara NHS Trust, RDW1 \ Clara Hospital, RDW101 \ Rosemary House, BH15 \ Basement, 0B</a>	42.49	44.94
<a href="#">\Clara NHS Trust, RDW1 \ Clara Hospital, RDW101 \ Clara Main Block, CMB \ Basement, 0B</a>	738.61	800.84
<a href="#">\Clara NHS Trust, RDW1 \ Clara Hospital, RDW101 \ Clara Main Block, CMB \ First Floor, 01</a>	1499.18	1600.47
<a href="#">\Clara NHS Trust, RDW1 \ Clara Hospital, RDW101 \ Rosemary House, BH15 \ First Floor, 01</a>	1085.9	1120.94
<a href="#">\Clara NHS Trust, RDW1 \ Clara Hospital, RDW101 \ Thyme House, RDW-TH \ First Floor, 01</a>	610.57	660.52
<a href="#">\Clara NHS Trust, RDW1 \ Clara Hospital, RDW101 \ Thyme House, RDW-TH \ Ground Floor, RDW-TH-00</a>	1015.97	1114.73
<a href="#">\Clara NHS Trust, RDW1 \ Clara Hospital, RDW101 \ Clara Main Block, CMB \ Ground Floor, 00</a>	2012.04	2240.91
<a href="#">\Clara NHS Trust, RDW1 \ Clara Hospital, RDW101 \ Rosemary House, BH15 \ Ground Floor, 0G</a>	1397.82	1499.54
<a href="#">\Clara NHS Trust, RDW1 \ Clara Hospital, RDW101 \ Clara Main Block, CMB \ Roof Void, RV</a>	574.31	595.06
<a href="#">\Clara NHS Trust, RDW1 \ Clara Hospital, RDW101 \ Clara Main Block, CMB \ Second Floor, 02</a>	1470.59	1600.33

1-10 of 10

## Multi-instance Charts

The screenshot below demonstrates that you can display multiple instances of the same chart on a single dashboard, with each instance presenting different data.



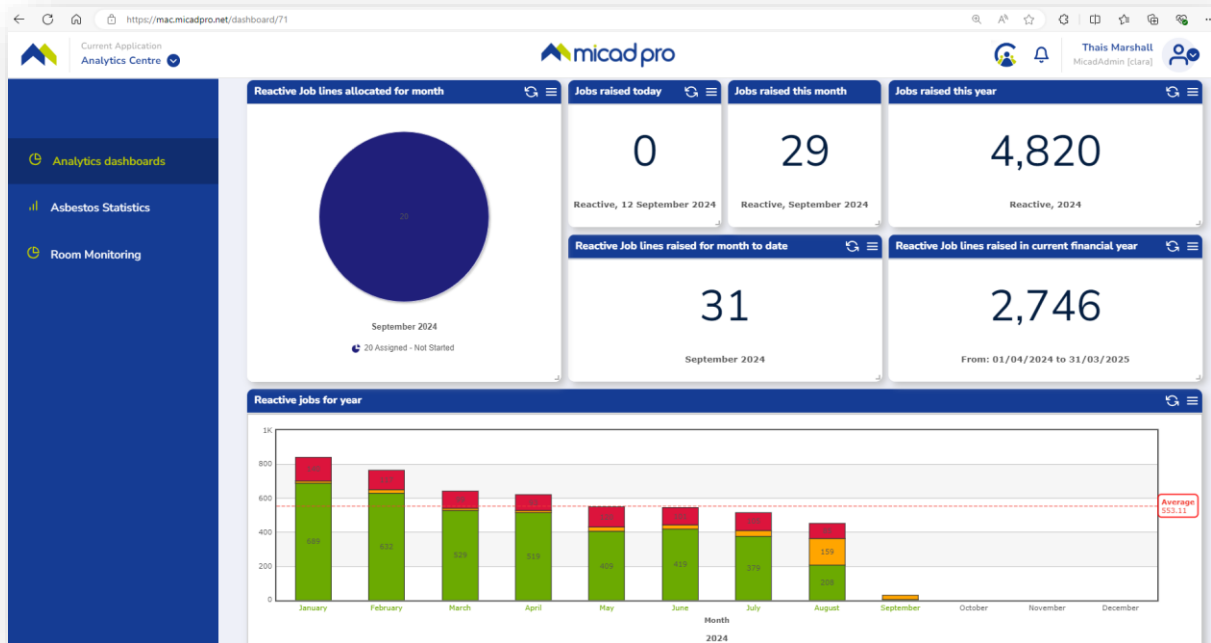
## Chart categories

There are the various types of charts you can add to your dashboard, all of which are fully customizable. The types of charts available to you will depend on the modules you have access to.

Currently, there are six chart categories:

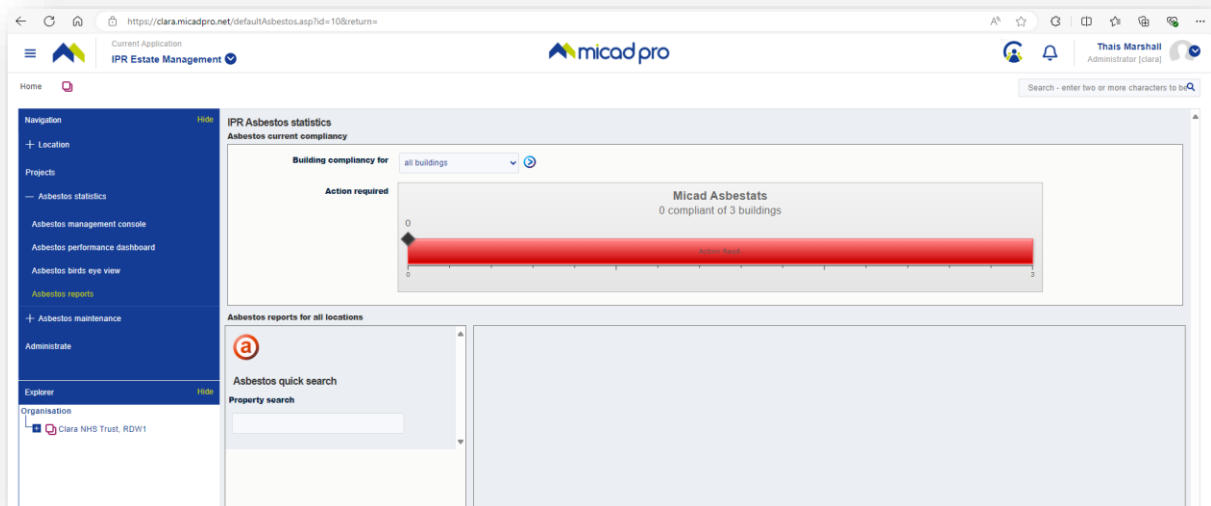
- Core Charts (10)
- Appraisal Charts (4)
- Capital Planning Charts (30)
- Compliance Charts (12)
- Help Desk Charts (18)
- Audit Charts (8)

## Dashboard example



## Asbestos Statistics

In the left-hand menu, the 'Asbestos Statistics' option offers a direct link to the Asbestos reports page.



## Room Monitoring dashboard

If a user has access to the RUM 2 application, they will see the Room Monitoring option in the left-hand menu. Upon selecting it, the user is presented with a read-only interactive view of the Room Monitoring dashboard, which consists of three tabs:

- Room Booking Portfolio Overview

- Attendance
- Utilisation

These tabs can be accessed by scrolling down the page.



## Release notes

Date	Version	Summary	Description
29/04/2026	APP 1.0.28645	This release delivers two bug fixes addressing the Worst Performing compliance widget logic and disappearing dashboard icons.	<p><b>Bug fixes</b></p> <p><b>REP2-514</b> Worst Performing compliance widget fix: Updated the logic of the widget to resolve incorrect behaviour.</p> <p><b>REP2-522</b> Widget dashboard icons fix: Fixed an issue where dashboard widget icons disappear when the widget name is too long.</p>
03/03/2026	APP 1.0.28255	This update includes bug fixes, data corrections, and a new Power BI dashboard demo.	<p><b>New Features &amp; Improvements:</b></p> <p><b>MAC2-84 / REP2-394</b> Delivered Space Utilisation Power BI dashboard MVP (demo client only).</p> <p><b>MAC2-83</b> Updated query for Expired Elements to display correct elements.</p> <p><b>Bug fix</b></p> <p><b>MAC2-37</b> Fixed issue where dashboard tile buttons disappeared after renaming the dashboard twice.</p> <p><b>MAC2-81 / REP2-385</b> Fixed issue where the global location filter was not applied to drilldown in Expired Elements.</p> <p><b>MAC2-82 / REP2-386</b> Fixed issue where the global location filter was not applied to drilldown in Outstanding Actions.</p>
16/09/2025	APP 1.0.27052	This release includes new features, improvements, security updates, and bug fixes.	<p><b>New Features &amp; Improvements:</b></p> <p><b>MAC-4</b> Upgraded system dependencies.</p> <p><b>MAC-8</b> Added a new “Worst Performing” widget for compliance.</p> <p><b>MAC-27</b> Removed legacy versions of the “Worst Performing” widgets.</p> <p><b>MAC-28</b> Improved the drilldown view in the “Worst Performing” widget.</p> <p><b>12040</b> Application now logs page visits.</p> <p><b>13706</b> Updated the behaviour of the location tree select function.</p> <p><b>13936</b> Added a link to release notes in the MAC “About” page.</p> <p><b>14090</b> Added FusionCharts license.</p> <p><b>Bug Fixes &amp; Security:</b></p>

			<p><b>MAC-3</b> Fixed a path traversal security vulnerability.</p> <p><b>13545</b> Fixed missing popup notification when deleting a dashboard.</p> <p><b>13707</b> Fixed issue with displaying all/multiple locations in the location tree multi-select.</p> <p><b>13972</b> Fixed authorization issue when downloading data.</p> <p><b>15386</b> Fixed issue where a widget disappeared when being moved.</p>
30/01/2025	APP 1.0.23708	This release includes user interface enhancements and widget improvements.	<p><b>13707</b> Updated location list display to show no/multiple/all instead of full location names.</p> <p><b>13706</b> Added search functionality to the location tree.</p> <p><b>13724</b> Fixed widget list item text overflow issue.</p> <p><b>13643</b> Added IPR MAC widget description.</p>
04/10/2024	APP 1.0.22936	This release includes user interface updates and bug fixes.	<p><b>13388</b> Fixed issue where widgets were not removed from the dashboard when the license was removed.</p> <p><b>13382</b> Updated MAC UI notification pop-up.</p> <p><b>13383</b> Added option to return to the dashboard tab.</p>

**END**